



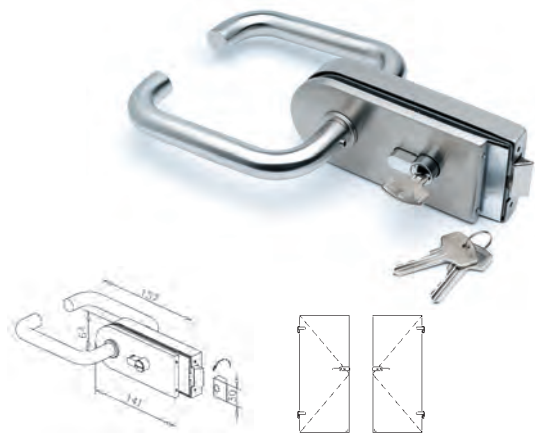
ARMADA OPTEC GLASS FITTINGS

A varied range of
Stainless Steel fittings for
glass is displayed over the next
few pages, complete with fully
dimensioned drawings and cut-out
details.

Many are available from stock,
with a huge range of additional
items available within a week –
please ask us for details!

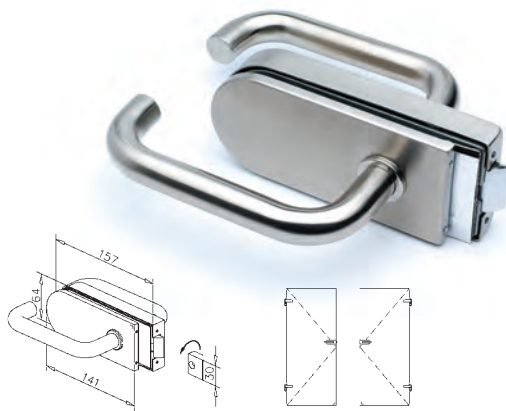


GLASS DOOR LOCK SYSTEM



Locking latch patch complete with cylinder, Satin or Polished Stainless Steel.

GGF040



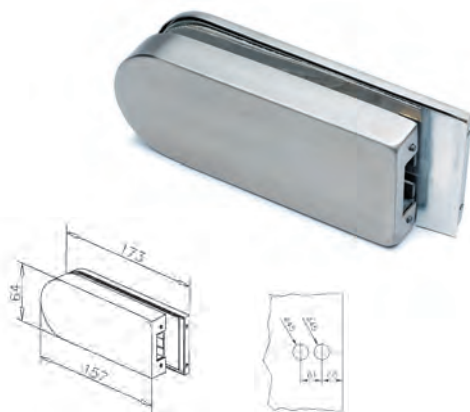
Lever latch patch in Satin or Polished Stainless Steel.

GGF030



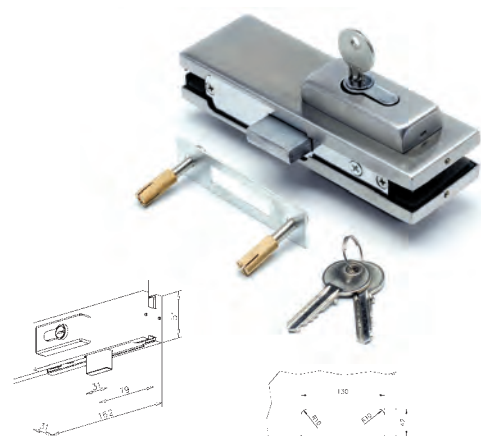
Privacy lever patch fitting - complete with turn and release - Satin or Polished Stainless Steel.

GGF010



Latch keep in Satin or Polished Stainless Steel.

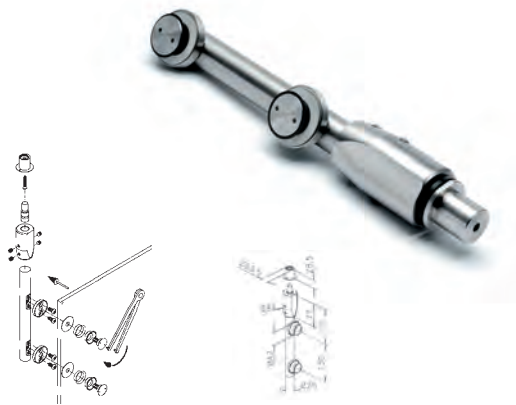
GGF020



Centre lock patch complete with cylinder, Satin or Polished Stainless Steel. Strike patch available.

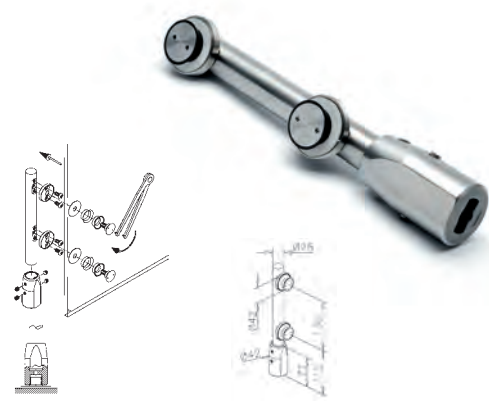
GGF100

GLASS HINGES



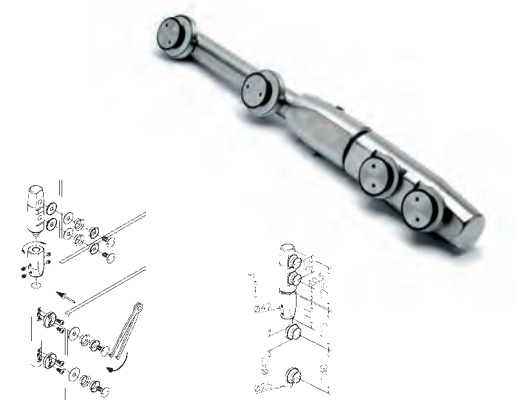
Top glass pivot, 10-12mm glass, Satin Stainless Steel.

GGF200



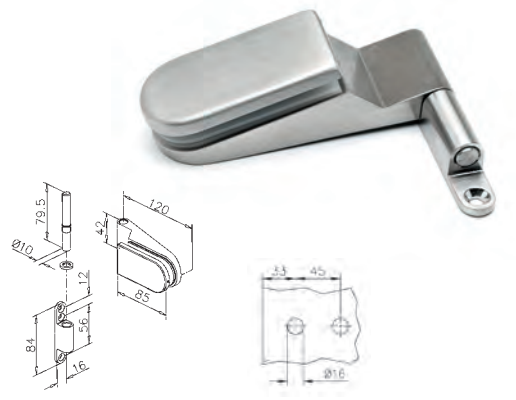
Bottom glass pivot, 10-12mm glass, Satin Stainless Steel.

GGF210



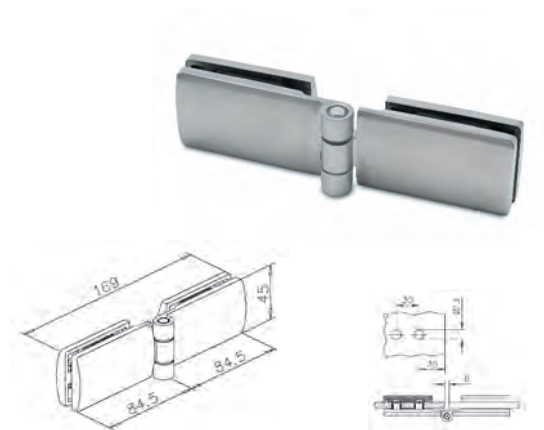
Transom pivot, 10-12mm glass, Satin Stainless Steel.

GGF220



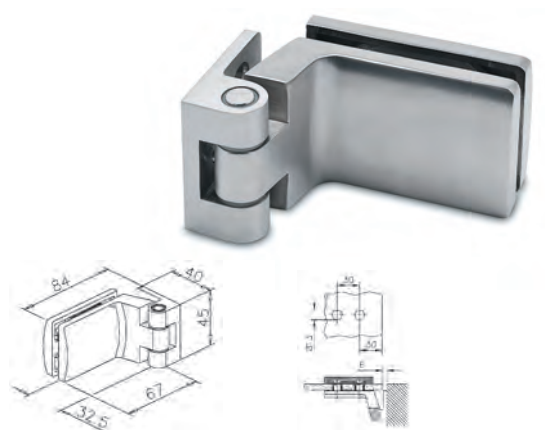
Lift off glass to frame hinge, 8-10mm glass, Satin Stainless Steel.

GGF230



Glass to glass hinge, suitable for 8-10mm glass,
Satin or Polished Stainless Steel.

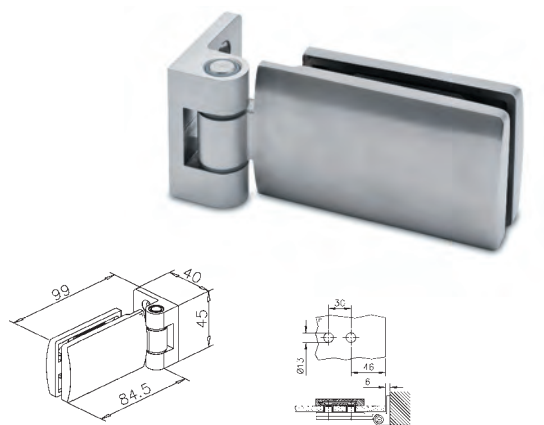
GGF240



GLASS TO WALL HINGE 0 DEGREE
SUITABLE FOR
10MM GLASS SATIN OR POLISHED

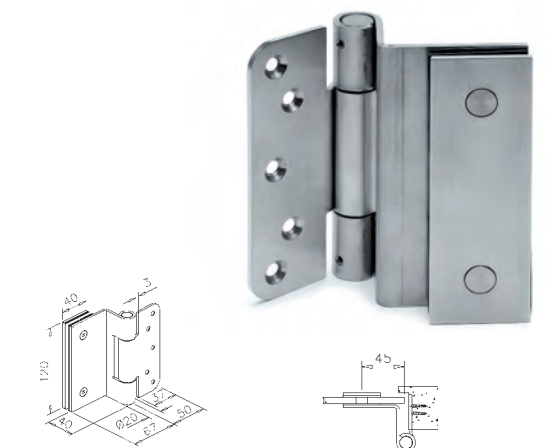
GGF260

Stainless Steel.



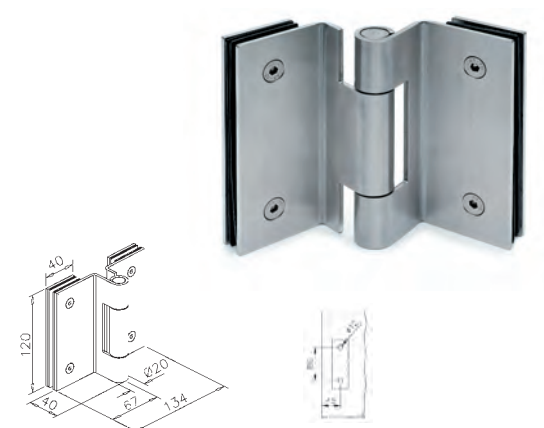
Glass to wall hinge, 90 degree, suitable for
6-10mm glass, Satin or Polished Stainless Steel.

GGF250



Glass to timber hinge, suitable for 10-12mm glass,
Satin or Polished Stainless Steel.

GGF290



Glass to glass hinge, suitable for 10-12mm glass,
Satin or Polished Stainless Steel.

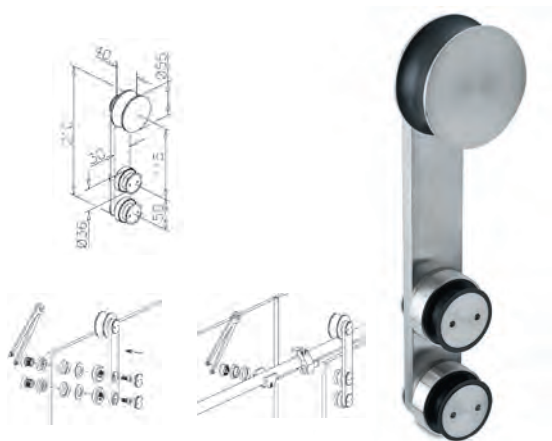
GGF300

GLASS POCKET DOOR SYSTEM



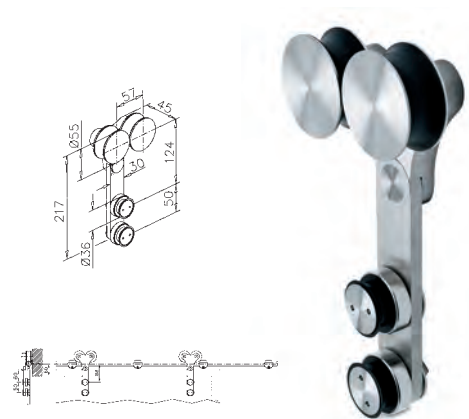


SLIDING SYSTEM



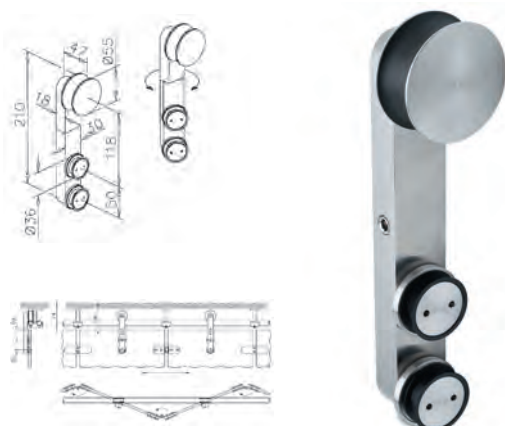
Single roller, Satin Stainless Steel.

GGF780



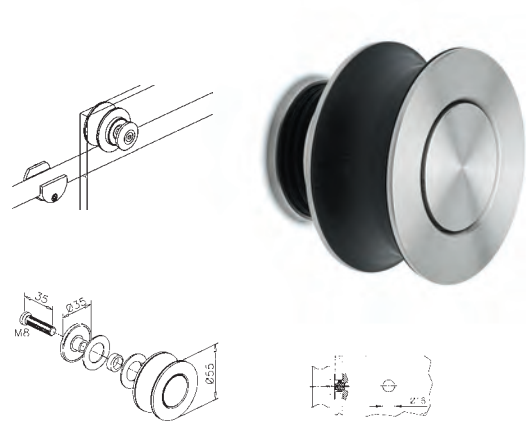
Double roller, Satin Stainless Steel.

GGF710



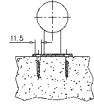
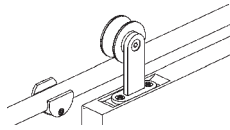
Door roller, turnable, Satin Stainless Steel.

GGF700

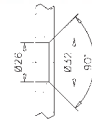
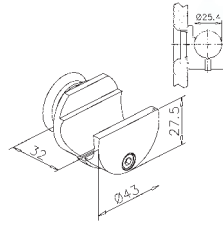


Roller for glass fixing, Satin Stainless Steel.

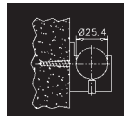
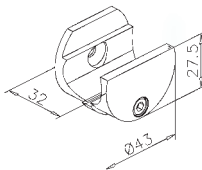
GGF720



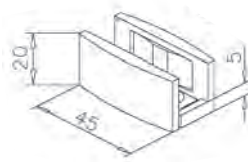
GGF730



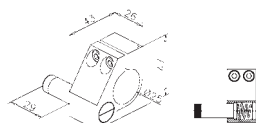
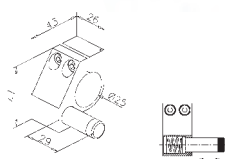
GGF740



GGF750



GGF770

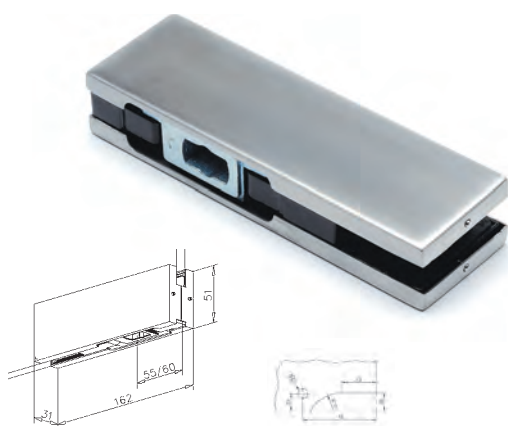


GGF760L



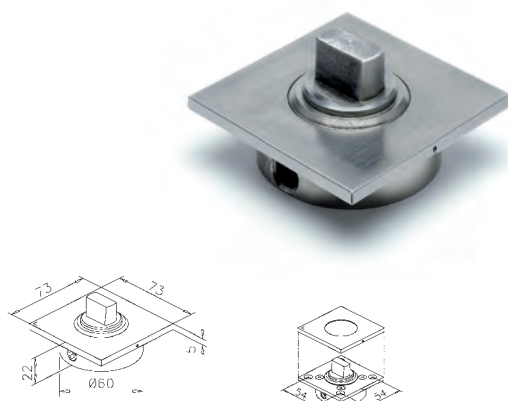
GGF790

PIVOT PATCHES



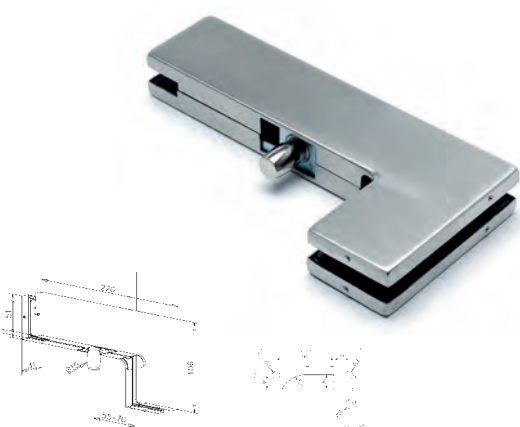
Bottom pivot patch, Satin or Polished Stainless Steel.

GGF500



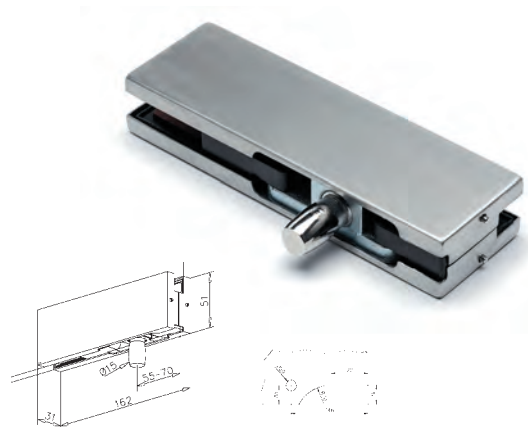
Floor pivot to suit bottom pivot patch, Satin Stainless Steel.

GGF550



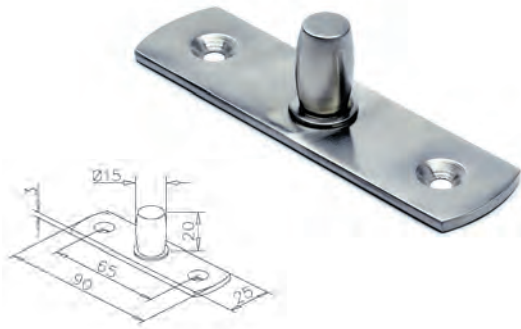
Corner over panel pivot patch, Satin or Polished Stainless Steel.

GGF530



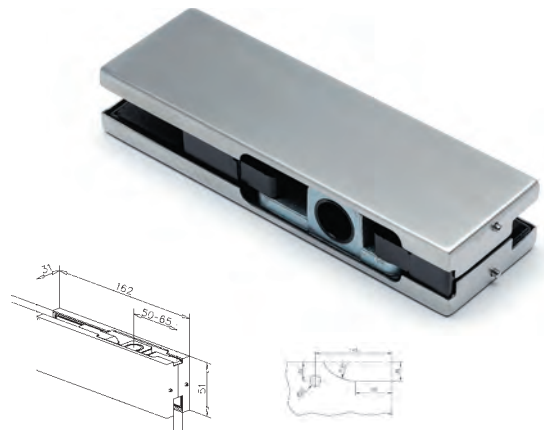
Over panel pivot patch, Satin or Polished Stainless Steel.

GGF520



Top pivot, suitable for timber or aluminium frames.

GGF560



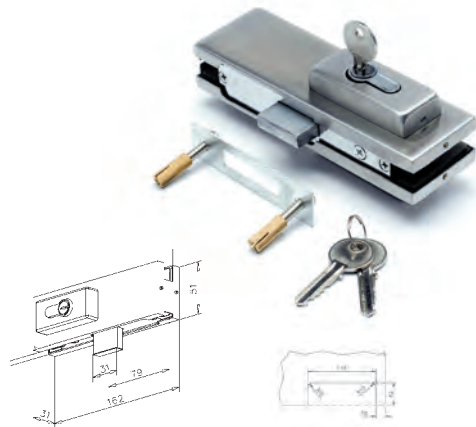
Top pivot patch, Satin or Polished Stainless Steel.

GGF510



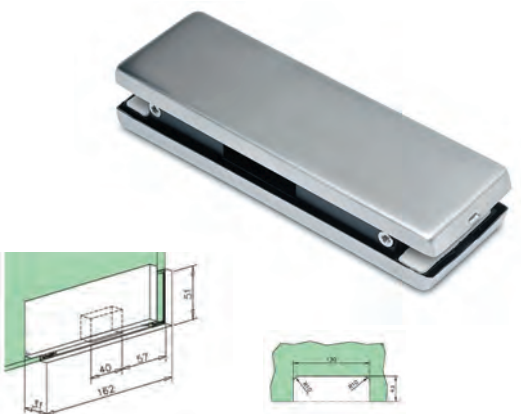
Floor spring unit only, power size 3, c/w cover in Satin Stainless Steel. Hold Open version available.

CRU750



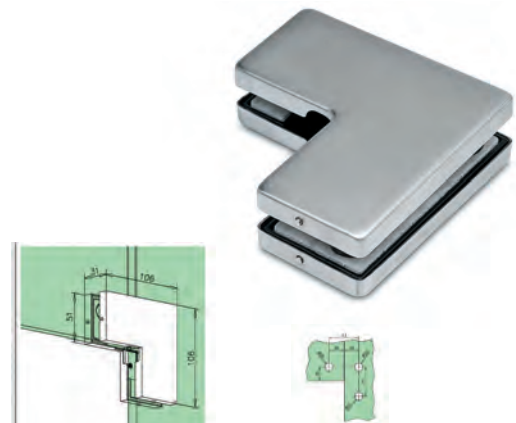
Lock patch complete with cylinder, 10-12mm glass, Satin Stainless Steel.

GGF100



Lock patch keep to suit GGF100, Satin Stainless Steel.

GGF570



Corner connection patch, 10-12mm glass, Satin Stainless Steel.

GGF590

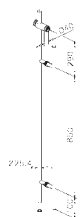
PULL HANDLES & KNOBS



Range of cranked D-pulls available - please ask for details on sizes.



Range of D-pulls available - please ask for details on sizes.

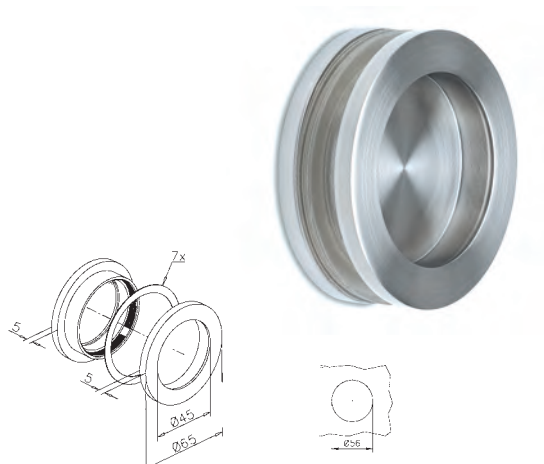


Lockable glass entrance pull handles, Satin Stainless Steel.

GGF820

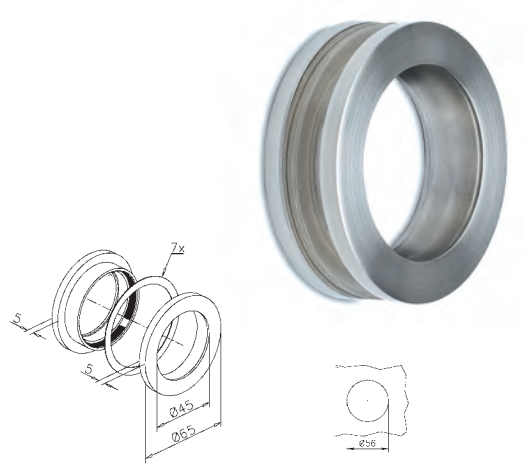


Range of entrance door handles available - please ask for details on sizes.



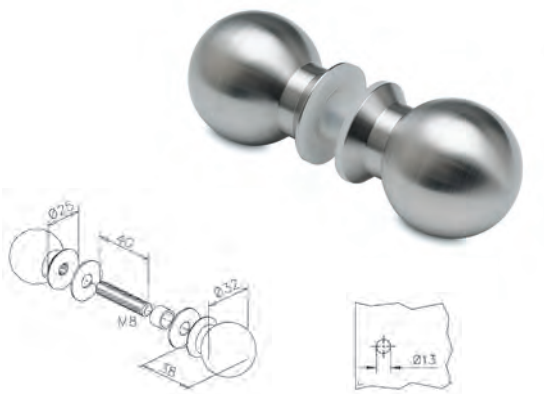
Solid circular pull, Satin Stainless Steel.

GGF800



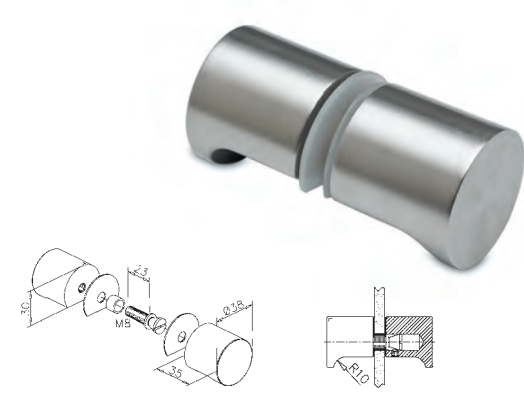
Through pull, Satin Stainless Steel.

GGF810



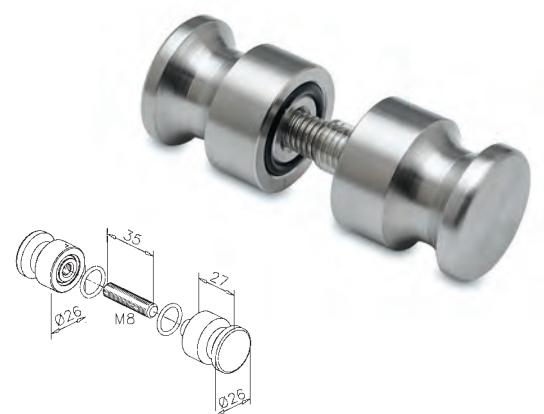
Ball knob handle, Satin Stainless Steel.

GGF830



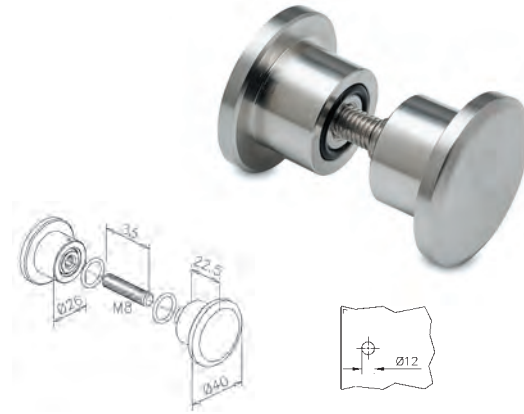
Scalloped knob handle, Satin Stainless Steel.

GGF840



Groove knob handle, Satin Stainless Steel.

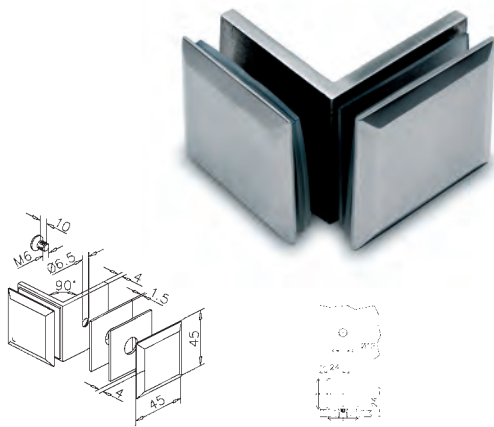
GGF850



Step knob handle, Satin Stainless Steel.

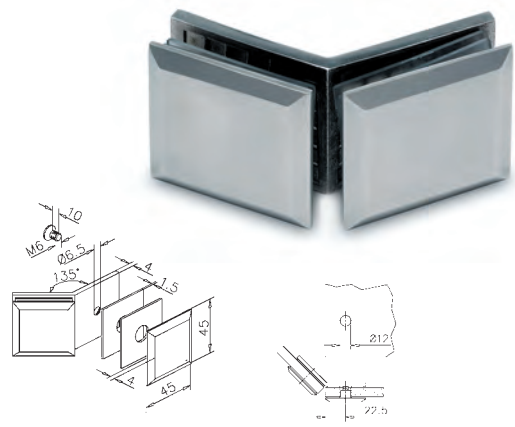
GGF860

SHOWER CUBICLE FITTINGS



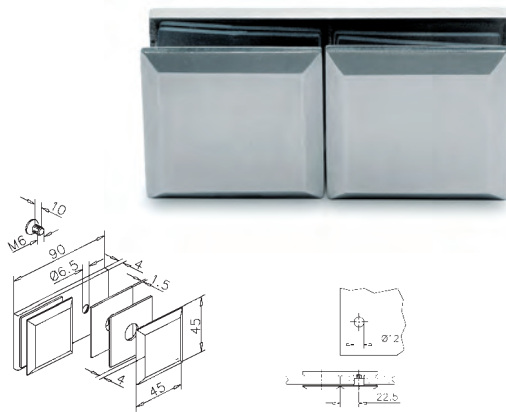
Glass to glass 90 degree clamp, Polished Stainless Steel.

GGF900



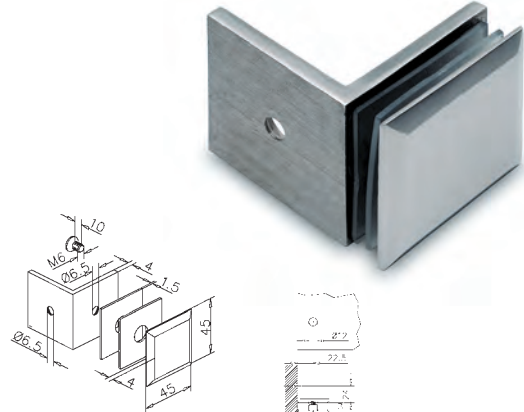
Glass to glass 135 degree clamp, Polished Stainless Steel.

GGF910



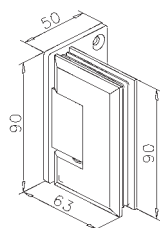
Glass to glass 180 degree clamp, Polished Stainless Steel.

GGF920



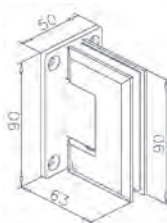
Glass to wall clamp, Polished Stainless Steel.

GGF930



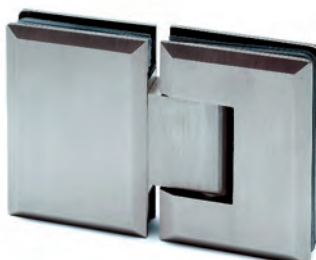
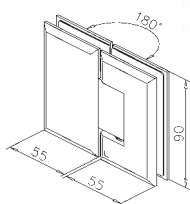
Glass to wall shower door hinge with offset plate, 90 degree, suitable for 8-12mm glass, Polished Stainless Steel.

GGF280



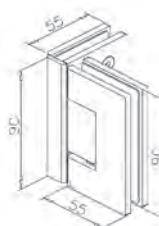
Glass to wall shower door hinge, 90 degree, suitable for 8-12mm glass, Polished Stainless Steel.

GGF270



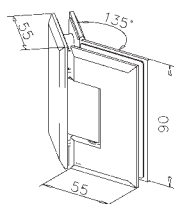
180 degree glass to glass cubicle hinge, 8-10mm glass, Polished Stainless Steel.

GGF310



90 degree glass to glass cubicle hinge, 8-10mm glass, Polished Stainless Steel.

GGF320



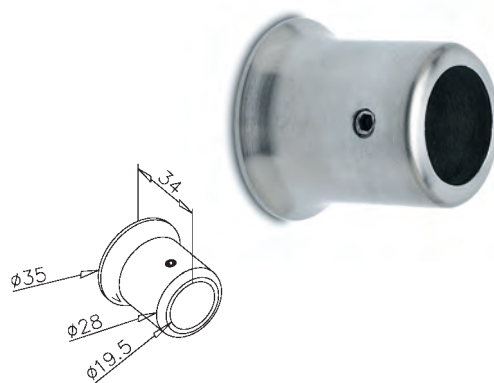
135 degree glass to glass hinge, 8-10mm glass, Polished Stainless Steel.

GGF330



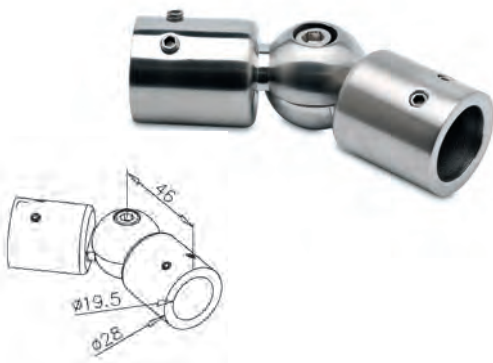
Tube holder, 19mm, Satin Stainless Steel.

GGF991



Tube mounting bracket, 19mm, Satin Stainless Steel.

GGF992



Adjustable tube joint, 19mm, Satin Stainless Steel.

GGF993



19mm tube, Satin Stainless Steel.

GGF994



19mm tube end cap, Satin Stainless Steel.

GGF995



90 degree magnetic door seal, 8-10mm glass, Clear.

GGF940



135 degree magnetic door seal, 8-10mm glass, Clear.

GGF950



180 degree magnetic door seal, 8-10mm glass, Clear.

GGF960



Glass door seal, 8-10mm glass, Clear.

GGF970



Glass door seal, 8-10mm glass, Clear.

GGF980



Glass door seal, 8-10mm glass, Clear.

GGF990







t: 01223 363060
f: 01223 462448
action@armadadh.com
www.armadadh.com