


FUNCTIONPRO





The Armada FunctionPro (FP) range of ironmongery is a careful selection of top quality commercial hardware. Lever handles and complimentary pull handles are engineered in the UK from solid T316 stainless steel, ensuring longevity and durability as well as beauty. A range of finishes is available, as well as countless bespoke manufacture options – if you can't see exactly what you are looking for, do please get in contact!

Armada also offer the Function Plus range (mid grade) and the standard Function range (entry level), to cover the full spectrum of commercial ironmongery. A separate brochure is available.

All items in the FP range come as standard in Satin Stainless Steel, but most are also available in a wide range of finishes to order; see our finish range below.

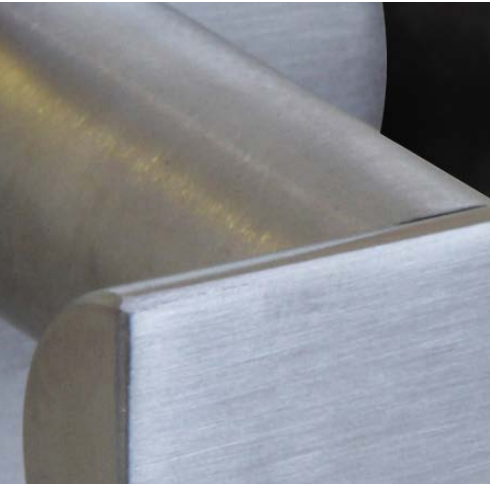
- Aged Bronze
- Antique Brass
- Copper Effect
- Dark Bronze
- Polished Bronze
- Imitation Bronze
- Polished Stainless Steel
- Real Bronze
- Polished Brass
- Satin Brass

quality and diversity



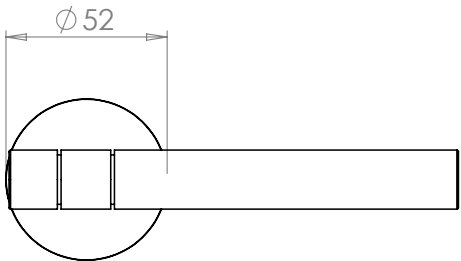
LEVER FURNITURE

Our FPro lever handles are precision manufactured in the UK, enabling us to offer a flexible and increasing range.



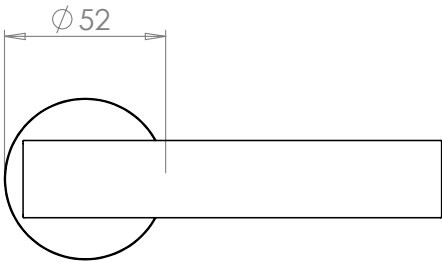
FP1000 SOFT TOUCH LEVER

Luxury lever handle with SoftCote grip and stepped leg, on concealed fix Slim rose. Warmer to the touch than bare metal, the SoftCote is extremely durable and tactile. Solid Grade 316 Stainless Steel for long term performance. Complete with our high quality Grip fixings.



FP2000 HALF OVAL LEVER

Heavy duty lever handle with a big presence but a subtle curved back. Operating it is a pleasure! Solid Grade 316 Stainless Steel for long term performance. Complete with our high quality Grip fixings. Available in all finishes.

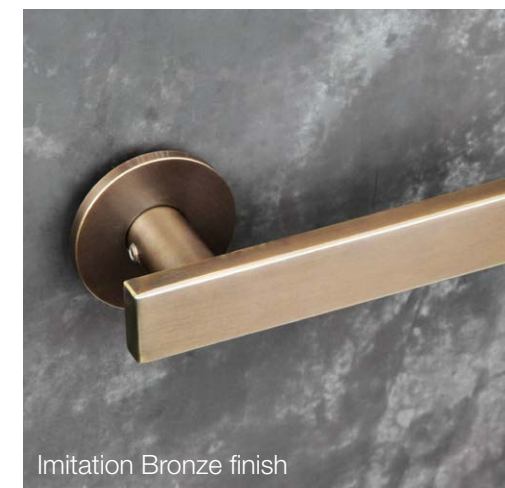
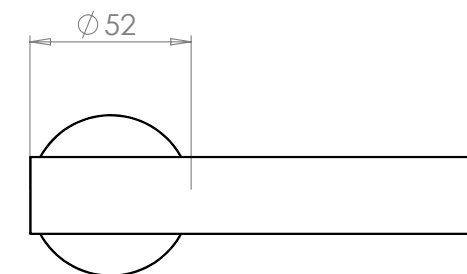






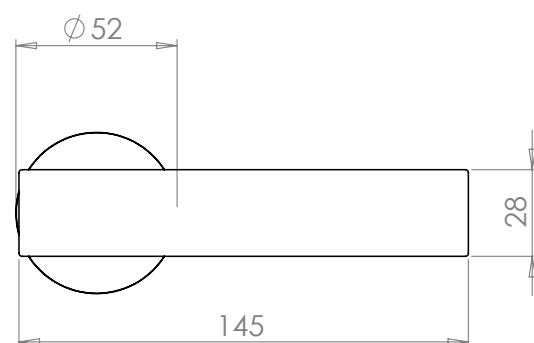
#### FP4000 FLAT SECTION LEVER

Rectangular bar lever, with softened corners for comfort. Modern design statement. Solid Grade 316 Stainless Steel for long term performance. Complete with our high quality Grip fixings. Available in all finishes.



#### FP3000 FULL OVAL LEVER

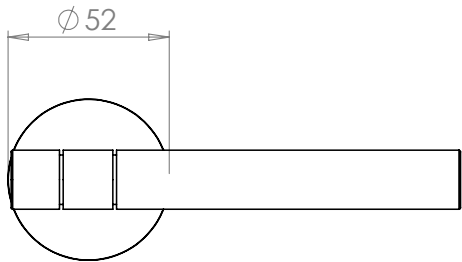
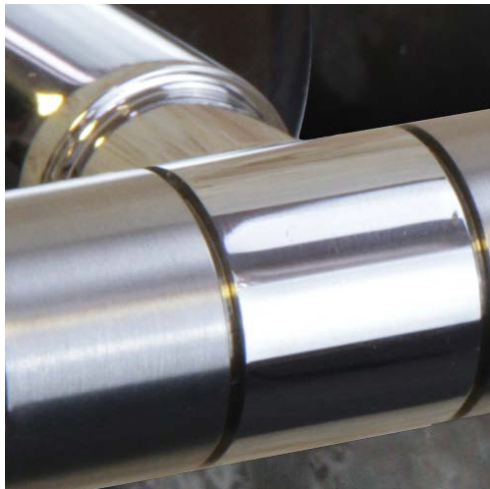
The original oval lever handle. Solid Grade 316 Stainless Steel for long term performance. Complete with our high quality Grip fixings. Available in all finishes.





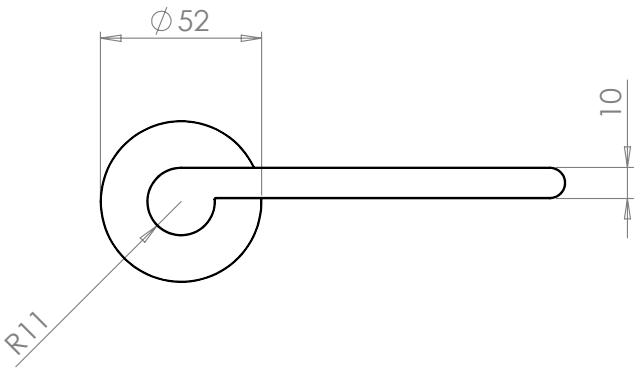
FP5000 MODU LEVER

Sophisticated lever handle with a choice of contrasting finishes. Solid Grade 316 Stainless Steel for long term performance. Complete with our high quality Grip fixings. Available in all finishes.



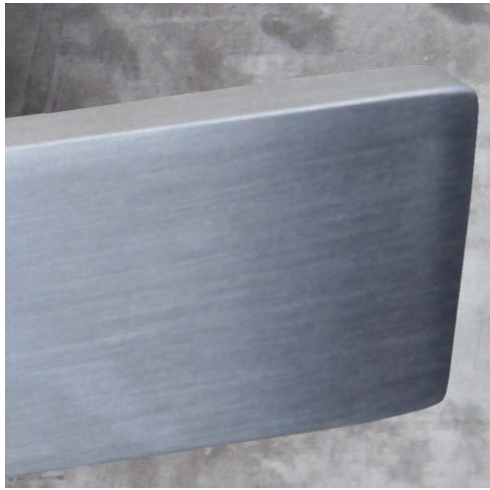
FP6000 LEVER

Delicate lever handle with a subtly rounded end and softened edges. Solid Grade 316 Stainless Steel for long term performance. Complete with our high quality Grip fixings. Available in all finishes.



Copper Effect finish





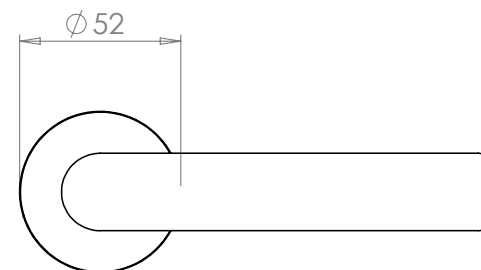
#### FP8000 SAFETY LEVER

DDA Compliant lever furniture from solid 19mm bar. Solid Grade 316 Stainless Steel for long term performance. Complete with our high quality Grip fixings. Available in all finishes.

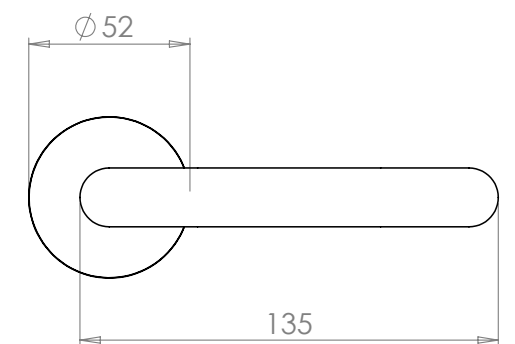


#### FP7000 LEVER

Solid Grade 316 Stainless Steel for long term performance. Complete with our high quality Grip fixings. Available in all finishes.



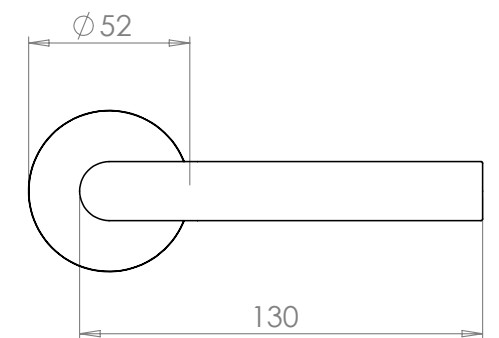
Real Bronze finish





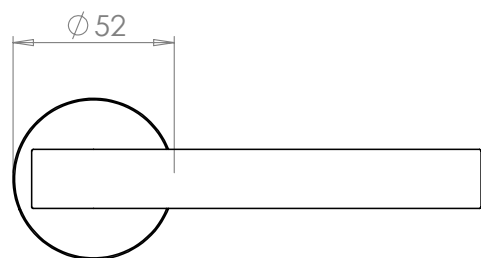
#### FP9800 STRAIGHT LEVER

Straight lever furniture from solid 19mm bar, the ultimate in simplicity. Solid Grade 316 Stainless Steel for long term performance. Complete with our high quality Grip fixings. Available in all finishes.



#### FP9000 T BAR LEVER

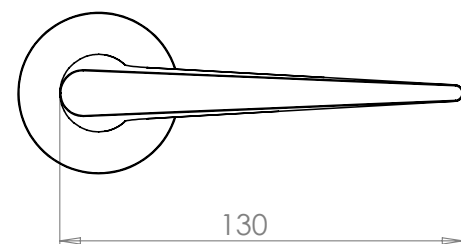
Popular T-bar design in Solid Grade 316 Stainless Steel for long term performance. Complete with our high quality Grip fixings. Available in all finishes.







Aged Bronze finish



#### FP9900 WEDGE LEVER

Elegant tapered design in Solid Grade 316 Stainless Steel for long term performance. Complete with our high quality Grip fixings. Available in all finishes.



## PULL HANDLES

In the FP range, we manufacture matching pull handles to complement all of our lever furniture. A selection are shown on the following pages. They are all available in a wide range of bespoke lengths as well as the 300mm, 425mm and 600mm standard lengths.

#### FP2500 HALF OVAL PULL HANDLE

Fabricated from solid Grade 316 Stainless Steel. Available in a range of fixing centres, bolt through and back to back configurations. Available in all finishes.



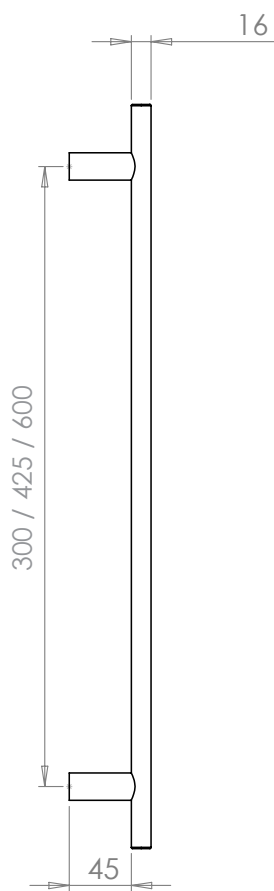
Satin Brass finish





FP3500 OVAL PULL HANDLE

Fabricated from solid Grade 316  
Stainless Steel. Available in a range  
of fixing centres, bolt through and  
back to back configurations.  
Available in all finishes.

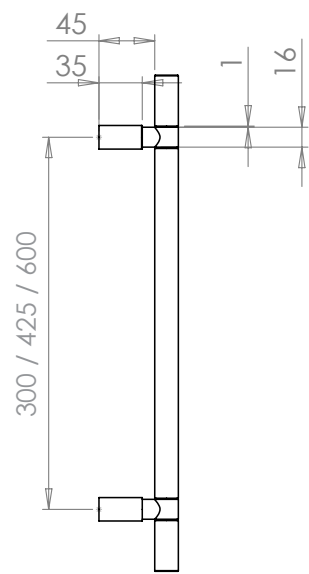


FP4500 FLAT SECTION PULL HANDLE

Fabricated from solid Grade 316  
Stainless Steel. Available in a range  
of fixing centres, bolt through and  
back to back configurations.  
Available in all finishes.







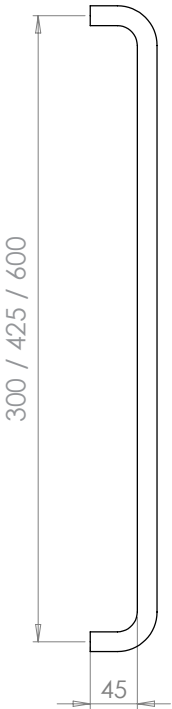
**FP5500 MODU PULL HANDLE**

Fabricated from solid Grade 316 Stainless Steel. Available in a range of fixing centres, bolt through and back to back configurations.

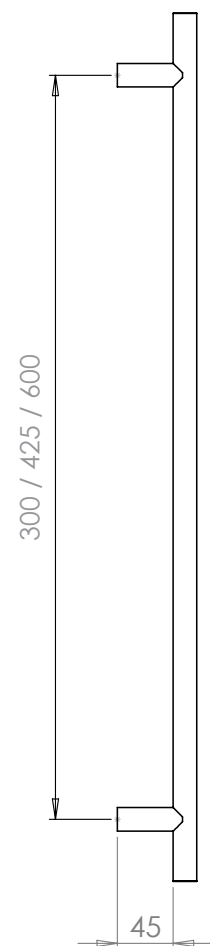


**FP8500 D-PULL HANDLE**

Fabricated from solid Grade 316 Stainless Steel. Available in a range of fixing centres, bolt through and back to back configurations. Available in all finishes.







#### FP9500 T BAR PULL HANDLE

Fabricated from solid Grade 316 Stainless Steel. Available in a range of fixing centres, bolt through and back to back configurations. Available in all finishes.



#### FP9980 MITRED PULL HANDLE

Fabricated from solid Grade 316 Stainless Steel. Available in a range of fixing centres, bolt through and back to back configurations. Available in all finishes.





ACCESSORIES



EURO PROFILE ESCUTCHEON  
Concealed fixing, metal base rose. Available in Euro, Oval and Keyway configurations. Available in all finishes.

BATHROOM THUMBTURNS  
Profile thumbturn with emergency release and red/white indicator. Long arm turn available for disabled WC applications. Available in all finishes.



EURO PROFILE CYLINDER PULL  
Available in Euro, Oval and Keyway configurations. Available in all finishes.







#### DIN EURO PROFILE SASHLOCK

DIN Standard mortice lock with 60mm backset and 72mm centres. To EN12209, and EN-1634. Available in all finishes.



#### DIN EURO DEADLOCK

DIN Standard mortice lock with 60mm backset. To EN12209, and EN-1634. Available in all finishes.

#### BARREL FLOOR DOOR STOP

Floor mounted door stop with single heavy duty fixing. Available in all finishes.



#### SPUR DOOR STOP

Skirting mounted door stop with flush rose. Available in all finishes.





#### 9000 SERIES OVERHEAD DOOR CLOSER

This door closer is highly efficient, suitable for door weights up to 110kg. Available with adjustable back check/delayed closing options. EN2-5. Available in all finishes.



#### CAM ACTION OVERHEAD DOOR CLOSER

Extremely compact and attractive unit, suitable for door weights up to 80kg. DDA Compliant for door widths minimum 857mm. EN2-4. Available in all finishes.



#### CONCEALED OVERHEAD DOOR CLOSER

Concealed overhead door closer, suitable for door weights up to 80kg. Easy to fit intumescent kit available. EN2-4.

#### CONCEALED JAMB DOOR CLOSER

Door closer concealed in the jamb, suitable for doors up to 80kg. Adjustable closing and latching actions. CE Marked. EN3.







#### DOOR PLATES

Kickplate, pushplates and protection plates available in a range of gauges. Available in all finishes.



#### LEVER ACTION FLUSH BOLT

Available in lengths up to 900mm for tall doors. Available in all finishes.

#### WC SYMBOLS

Liven up your signage with these cutting edge WC signs! Available in all finishes.



#### FIRE DOOR SIGN

A range of mandatory fire door signs, fully compliant with regulations.





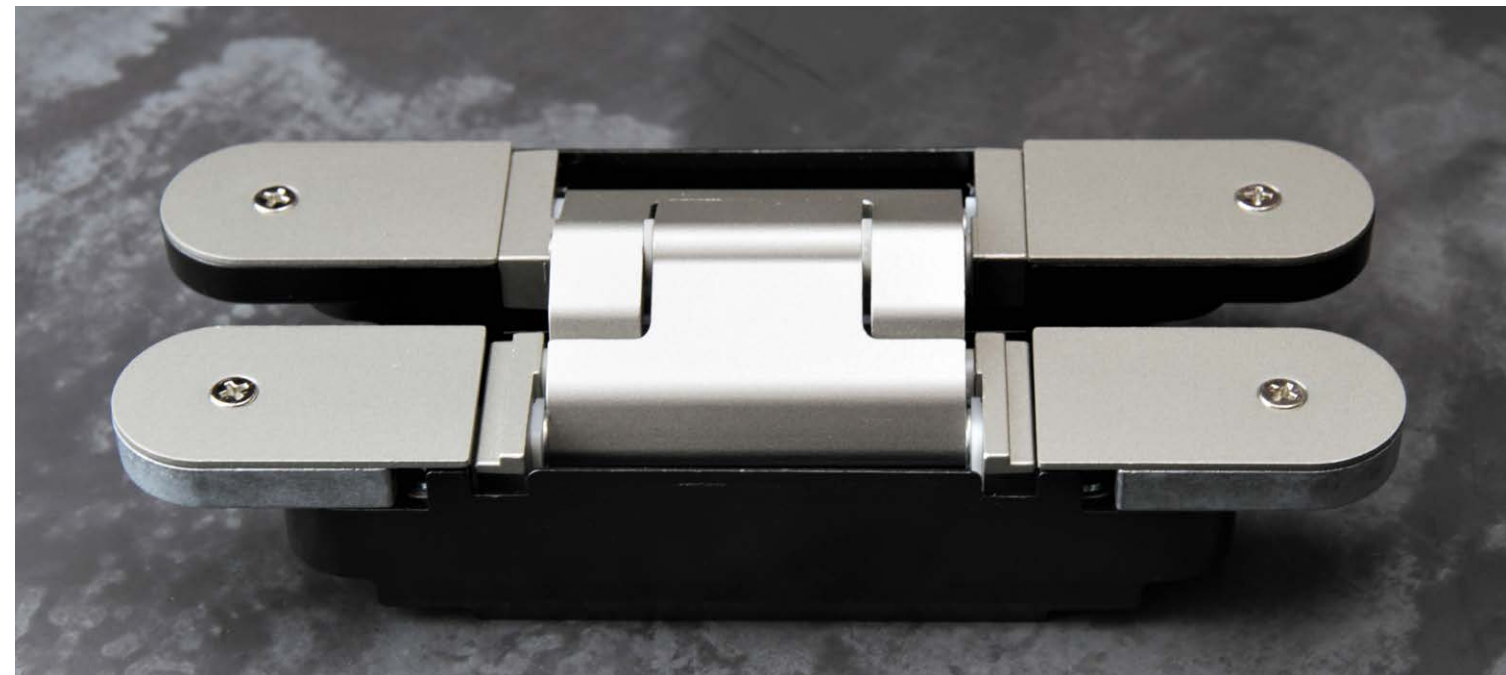
#### ROBE HOOK

Single elegant robe hook for mounting to doors or walls. Available in all finishes.



#### FLUSH PULL

180mm Flush pull for sliding doors. Available in lengths up to 1M. Available in all finishes.



#### TECTUS CONCEALED HINGE

A range of high quality German concealed hinges, suitable for doors up to 300KG. Full 3D adjustment enables easy fitting. Fire Rated versions available.

#### CONCEALED BEARING BUTT HINGE

100mm Grade 13 Concealed bearing butt hinge is maintenance free, guaranteed for 25 years. To BS EN 1935, max weight 160kg. Available in all finishes.



Antique Brass finish





FUNCTIONPRO



68 Church End | Cherry Hinton | Cambridge | CB1 3LB  
T: 01223 363060 | [sales@armadadh.com](mailto:sales@armadadh.com) | [www.armadadh.com](http://www.armadadh.com)