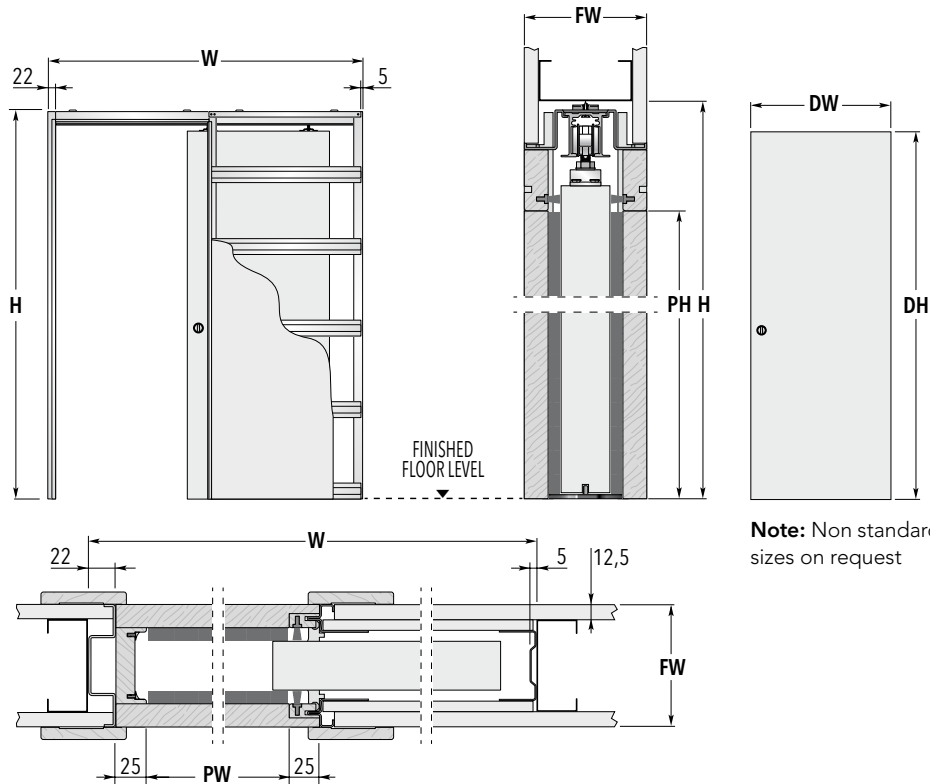


# CLASSIC SINGLE

## SINGLE POCKET DOORS SYSTEM



**Note:** Non standard sizes on request

FRAMES FOR SINGLE DOORS			DOOR PANELS UK	
MAX. PASSAGE SIZE PW x PH	OVERALL DIMENSION W x H	FINISHED WALL FW	DW	DH
600 x 2030	1294 x 2115	95 - 100 - 115 - 125	626	2040
700 x 2030	1494 x 2115	95 - 100 - 115 - 125	726	2040
800 x 2030	1694 x 2115	95 - 100 - 115 - 125	826	2040
900 x 2030	1894 x 2115	95 - 100 - 115 - 125	926	2040
1000 x 2030	2094 x 2115	95 - 100 - 115 - 125	1026	2040
585 x 1971	1279 x 2056	95 - 100 - 115 - 125	2ft. 0in. x 6ft. 6in. (610 x 1981 mm)	
661 x 1971	1455 x 2056	95 - 100 - 115 - 125	2ft. 3in. x 6ft. 6in. (686 x 1981 mm)	
737 x 1971	1631 x 2056	95 - 100 - 115 - 125	2ft. 6in. x 6ft. 6in. (762 x 1981 mm)	
813 x 1971	1707 x 2056	95 - 100 - 115 - 125	2ft. 9in. x 6ft. 6in. (838 x 1981 mm)	
900 x 1971	1894 x 2056	95 - 100 - 115 - 125	3ft. 0in. x 6ft. 6in. (914 x 1981 mm)	
675 x 1971	1469 x 2056	95 - 100 - 115 - 125	2ft. 4in. x 6ft. 6in. (711 x 1981 mm)	
775 x 2020	1669 x 2105	95 - 100 - 115 - 125	2ft. 8in. x 6ft. 8in. (813 x 2032 mm)	
850 x 2020	1844 x 2105	95 - 100 - 115 - 125	2ft. 10in. x 6ft. 8in. (864 x 2032 mm)	

Dimensions are given in mm



### NOTES

- ▶ Non standard sizes available up to PW 2000 x PH 2900mm passage size; door panel size DW 2026 x DH 2910mm.
- ▶ Suitable for use with 35 or 44mm thick doors.
- ▶ Includes complete timber lining kit for a professional finish.
- ▶ Double boarding option available to accommodate 140mm finished wall thickness.
- ▶ Doors, plasterboard and final architrave not supplied.
- ▶ When fitting flush pull handles we recommend the stop be regulated so the door protrudes from the pocket to avoid risk to fingers.
- ▶ Should the door be set to enter the pocket completely we do not accept any liability.
- ▶ Install at finished floor level.
- ▶ Self-centering floor guide with anti-warp profile.
- ▶ Max. door weight 100 kg (150 kg on request).



### ACCESSORIES

- ▶ **Door Furniture**  
Flush pulls and bathroom locks
- ▶ **ECLISSE BIAS®**  
Soft close up to 40 kg with anti-slam\*
- ▶ **ECLISSE BIAS® DS**  
Bi-directional soft close up to 40 kg with anti-slam\*
- ▶ **Soft Close**  
Slide the door towards the close position, the soft close takes over
- ▶ **Self Closing Mechanism**  
Open the door and it closes by itself!
- ▶ **E-MOTION**  
Linear motor open/close

\* Above a door panel weight of 40 kg the anti-slam will still work but the door may not close completely against the doorpost of its own accord.